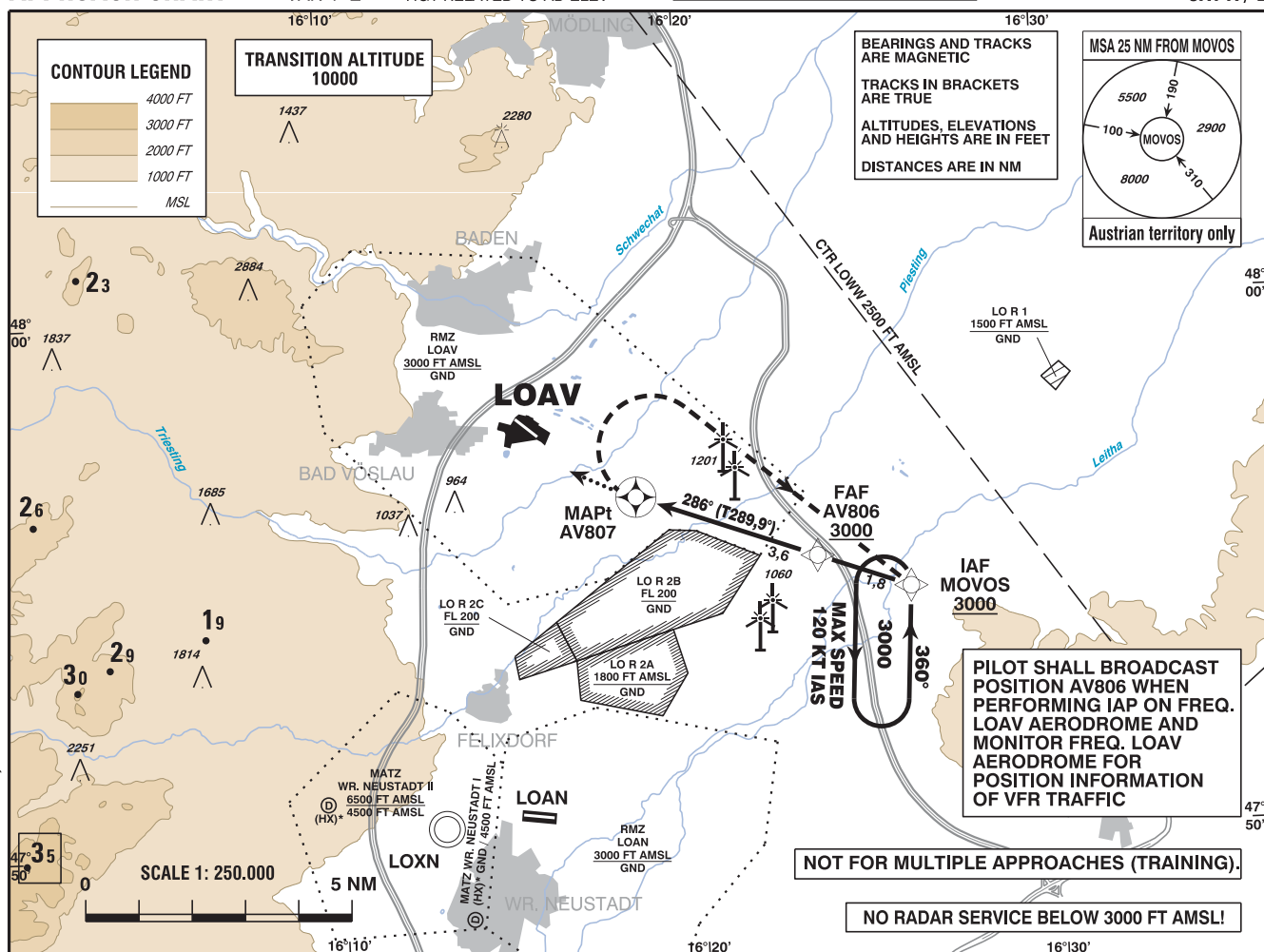


**INSTRUMENT  
APPROACH CHART**

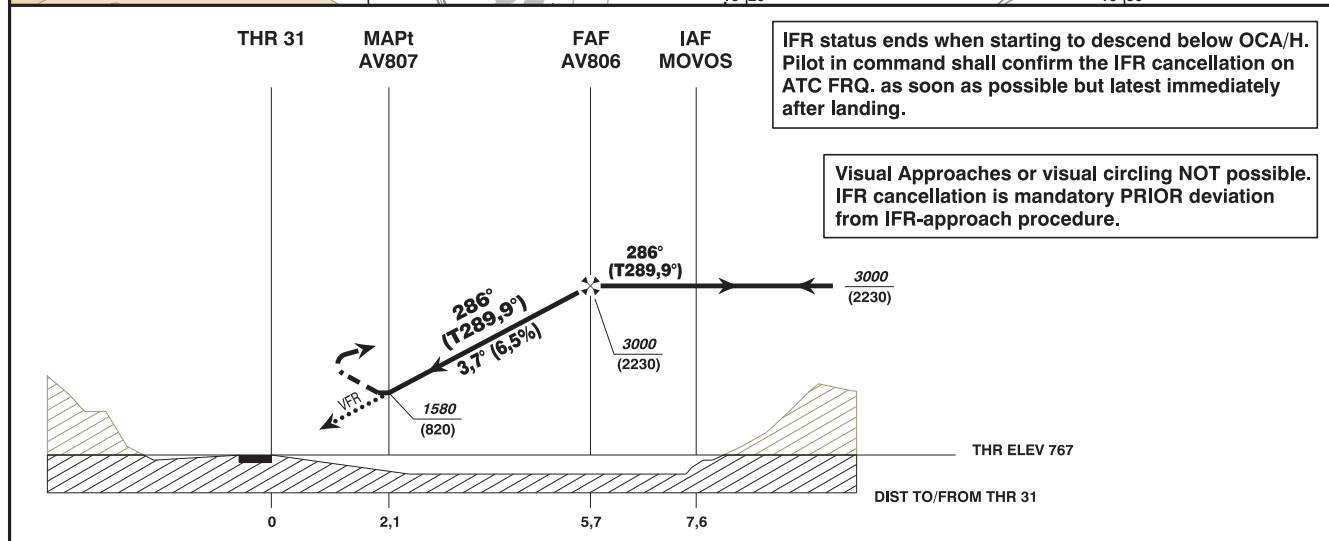
VAR 4° E

AD ELEV 767 FT  
THR 31 ELEV 767 FT  
HGT RELATED TO AD ELEV

WIEN RADAR 134.675 MHZ  
TFI 118.525 MHZ  
VÖSLAU AD 118.605 MHZ



CHANGE: AD FREQ.: EDITORIAL



**MISSED APPROACH:** AT AV807 TURN RIGHT TO MOVOS; CLIMB TO 3000 FT AMSL AND HOLD.

NOTE: MISSED APPROACH SPEED IS LIMITED TO MAX IAS 120 KT !

OCA (OCH) IN FT	A		B		AV806 to AV807 - DISTANCE 3,6 NM					
	GS (KT)	80	100	120	140					
LNAV	1580 (820)	AV806 - AV807	MIN : SEC	2:42	2:10	1:48	1:33			
		Rate of descent (6,5%)	FT / MIN	530	660	790	920			
VFR-PART: SEE CHART FOR VFR-FLIGHTS (LOAV AD 2.24-7-2)		DIST in NM to AV807		3	2					
		ALT (HEIGHT)		2770 (2003)	2370 (1603)					

Instrument Approach Procedure Coding Table Vöslau RNAV (GNSS) 286											
Path Terminator	Waypoint				Course/ Track ° MAG (° True)	DIST NM	Turn Direction	Constraints		Navigation Specification	Remarks
	Identifier	Type	Flyover	Coordinates				Level	Speed		
IF	MOVOS	IAF	no	N475440.60 E0162614.08				A3000+		RNP APCH	
TF	AV806	FAF	no	N475518.25 E0162339.30	286° (289.9°)	1.8		A3000+		RNP APCH	
TF	AV807	MAPt	yes	N475631.21 E0161838.45	286° (289.9°)	3.6				RNP APCH	
DF	MOVOS	MAHF	no	N475440.60 E0162614.08			right	A3000+	K120-	RNP APCH	
<b>RNAV Holding</b>											
Holding Point	Inbound Track ° True	Inbound Track ° MAG	Turn Direction	MAX IAS	Minimum Holding Altitude FT MSL / FL	Time	DIST NM	Remarks			
MOVOS	003.6°	360°	left	K120-	A3000	1 MIN					
<b>THR Coordinates</b>											
RWY 13	N475802.51 E0161521.87										
RWY 31	N475742.77 E0161556.97										